

Buildings with vision

Low Carbon Building Design
Advice Services
from the Carbon Trust



Making business sense
of climate change



Your guide

- › From making the case to handing over the keys: all the building procurer needs to know about creating good, energy-efficient buildings.



Making plans

- › Before the first footings are dug, we'll work with you and your team to make sure the design is right.



Building big

- › From refurbishing an ageing office block to the most prestigious new build: advice you can trust, throughout the process.

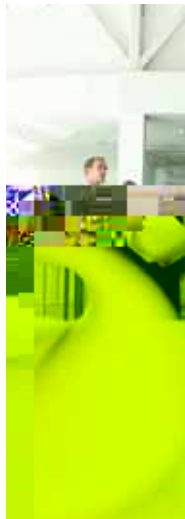


Multiple projects

- › For anyone creating multiple buildings to a pattern, from hotel to hospital, we'll help you get the template right.



The Carbon Trust is an independent, government-funded company dedicated to combating climate change by promoting energy efficiency and carbon emissions reduction in all areas of the UK economy. As part of this remit, we have been working closely with a leading team of consultants to develop a range of low carbon building design advice services. Available free, or on a subsidised basis to anyone involved in a significant non-domestic renovation or new build, these include a detailed printed guide and three different levels of face-to-face consultancy. Interested?



Your guide

Available free from the Carbon Trust, the Low Carbon Building Design Guide contains a detailed overview of what you need to know about procuring good, energy efficient buildings. Divided into four easy-to-use sections, it covers everything from deciding which technologies are right for your building, through to commissioning and maintenance. Although it's especially developed for those procuring smaller builds of up to 2,500m², the Guide has something to offer anyone involved in creating or adapting more environmentally-friendly non-domestic buildings.



Making plans

For larger builds and major renovations of 2,500 to 10,000m², the Carbon Trust is able to offer free or subsidised consultancy advice to help in the project's planning and design stage. The number of days' advice you receive will depend on the size of your project and the potential carbon savings. Although our consultancy services are often free, we do expect a level of commitment in return, in the form of monitoring and assessing both the value of the advice you receive and the actual measures you choose to implement.

Building big

Major building and renovation projects in excess of 10,000m² are eligible for substantial free or subsidised consultancy advice, delivered in stages throughout the life of the project, up to and including commissioning and handover. You will receive a minimum of 2-3 days' support at each intervention, from RIBA stages A to D, which could amount to 10 days or more between planning and handover. Very large projects or buildings of special significance will be treated as 'bespoke', and will be individually assessed.

Multiple projects

If your project involves a number of buildings with the same specification, we can work with you to ensure that best practice is built into the project from the start. Your Carbon Trust consultant will help you maximise opportunities for specifying energy efficient plant and fabric. Designed for projects with a cumulative floor area in excess of 10,000m², the exact number of days you receive will depend on your needs and the carbon saving potential of the specification.

To see how your project can benefit
from working with the Carbon Trust
call 0800 085 2005
click www.thecarbontrust.co.uk/buildingdesign

The Carbon Trust works with business and the public sector to cut carbon emissions and capture the commercial potential of low carbon technologies. An independent company set up by the Government to help the UK meet its climate change obligations through business-focused solutions to carbon emission reduction, the Carbon Trust is grant funded by the Department for Environment, Food and Rural Affairs, the Scottish Executive, the Welsh Assembly Government and Invest Northern Ireland.

This leaflet has been printed using recycled paper.

Published in the UK: April 2006.

The Carbon Trust is a company limited by guarantee and registered in England and Wales under Company Number 4190230 with its registered office at:
8th Floor, 3 Clement's Inn, London WC2A 2AZ.

This information is being made available to you as part of the Carbon Trust's general activity of promoting understanding of climate change and its implications for business.

Whilst the Carbon Trust has taken reasonable steps to ensure that the information contained in this leaflet is correct, it does not accept any liability for the content, accuracy and completeness of that information or for any loss arising from reliance on it. Any use made by you of this leaflet is at your own risk and it is recommended that you seek professional advice whenever appropriate.

Any trademarks, service marks or logos used in this leaflet are the property of the Carbon Trust and copyright is licenced to the Carbon Trust. Nothing in this leaflet shall be construed as granting any licence or right to use or reproduce any of the trademarks, service marks, copyright or the Carbon Trust's proprietary information in any way without the Carbon Trust's prior written permission.

The Carbon Trust enforces infringements of its intellectual property rights to the full extent permitted by law.

© Queen's Printer and Controller of HMSO 2006. All Rights Reserved.

Ref: PFL239

You can call us to discuss
any aspect of our Building
Design Advice Services.
So keep this card handy.

Buildings with vision

Low Carbon Building Design Advice Services
from the Carbon Trust

0800 085 2005

www.thecarbontrust.co.uk/buildingdesign



Checklist

- »» Your guide
Planning energy-efficient buildings
- »» Making plans
Getting the design right
- »» Building big
Advice on major projects
- »» Multiple projects
Working to a pattern

0800 085 2005

www.thecarbontrust.co.uk/buildingdesign

